

PremiumLift

Bed Accessories



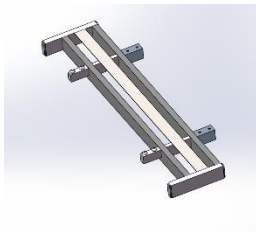
Self Help Pole

- Assist with moving and positioning in bed
- SWL Patient 80kg
- TGA Approved
- Powder coated steel frame and PVC handle
- Suitable for Ultra Low Bed and Low Low Bed



Grab Rail

- Can be used as a support pole, assists the patient into a seated position
- 400mm x 400mm
- Screw securely onto the bed frame
- TGA Approved
- Strong powder coated steel frame
- Suitable for Ultra Low Bed and Low Low Bed



Length Extension

- 20cm Length Extension
- Screw securely onto the bed frame
- TGA Approved
- Strong powder coated steel
- Suitable for Ultra Low Bed and Low Low Bed



Folding Side Rails – Full Length

- Ensures user remains safely in the bed and prevents falls risk
- Quick release pin mechanism
- Screw securely onto the bed frame
- TGA Approved
- Strong powder coated steel frame
- Supplied in pair
- Suitable for Low Low Bed and Ultra Low Bed



Fall Mat – Crash Mat

- Helps reduce impact forces by up to 90%
- Helps provide full coverage of the bed exit area
- 900 x 1780 x 30mm
- 3cm thick foam creates low profile edge
- Tri-fold design for easy storage
- TGA Approved
- Wipe clean vinyl cover
- Suitable for Ultra Low Bed and Low Low Bed